

# FLAT PANELS

An unadorned homogeneous textured tile with the blend of minimalism and bliss of finish.





## PLAIN

Monotonous yet not tasteless, a simple unpretentious minimal approach with the insertion of an enchantress soothing texture creates a awe-inspiring and sumptuous spatial element with the blend of lyricism.



900MM

300MM



14MM

# FLUTED PANELS

The effortless gesture of strokes, fabricating a linear motion and rhythm with the assistance of groovy texture.



Scanned with CamScanner



### REVERSAL 30

It cajoles the walls with finesse & reposes it, unfurls each melody laden curves with bliss and generous dollops of well rounded glides and ornamentation. Creates a quirky spatial element of visual appeal.



300MM

900MM



18MM





Scanned with CamScanner



## REVERSAL 60

Reversal 60 is an ameliorate version of reversal 30 which incorporates larger dollops of well rounded glides and lesser no. Of flutes, thereby vibing a more grand approach towards the space allocated.

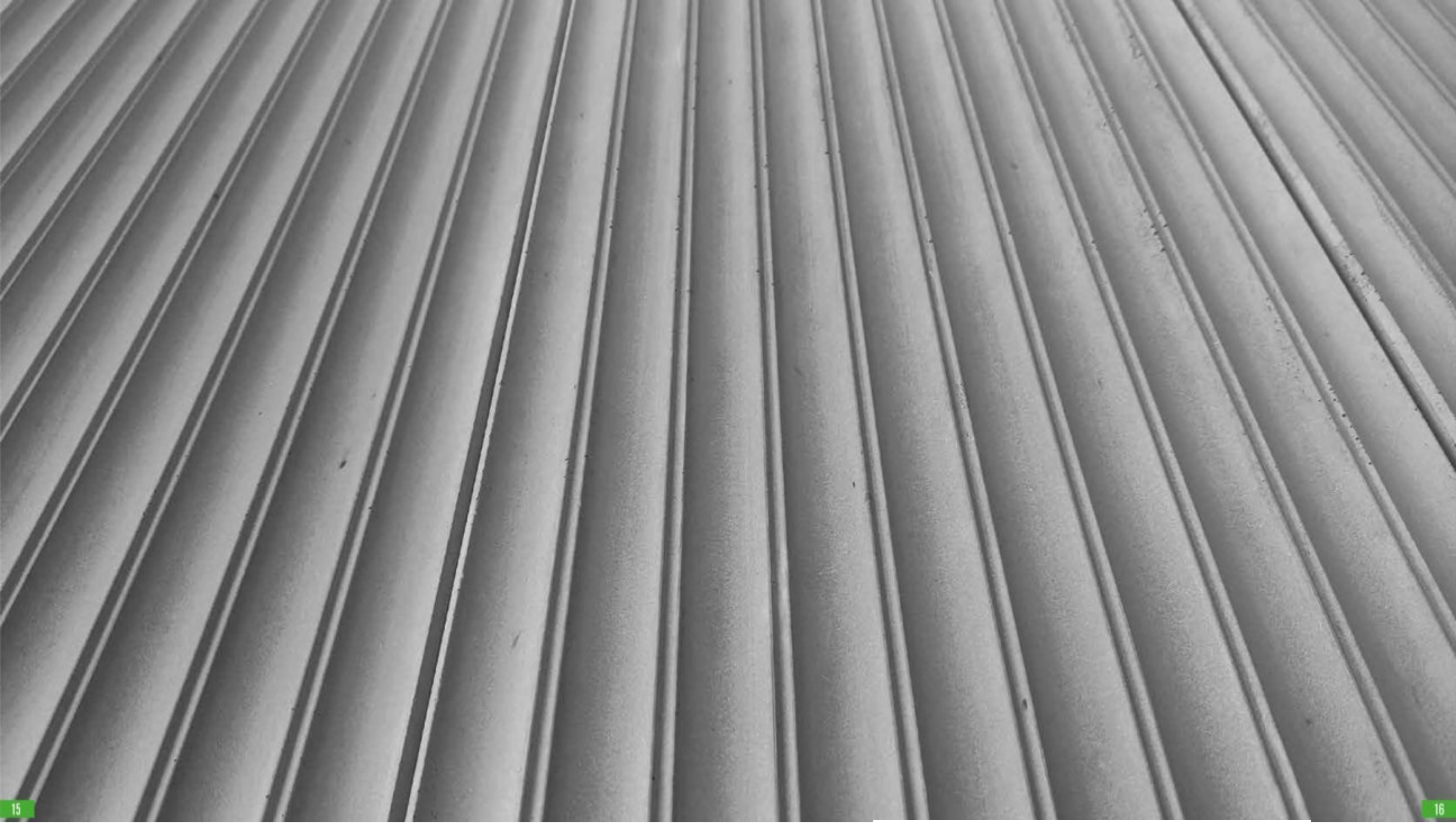


900MM

300MM



18MM







## BOW

The intricate flutes cajoles a seamless movement, creates a linear motion thereby manifesting a undeviating spatial twist to the environment applied.



Scanned with CamScanner

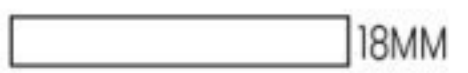






## PARALLEL

The seamless dashes , with more intricate flutes leaning towards a visual representation of parallel lines with infinite perceptible appeal creating a more dynamic space.

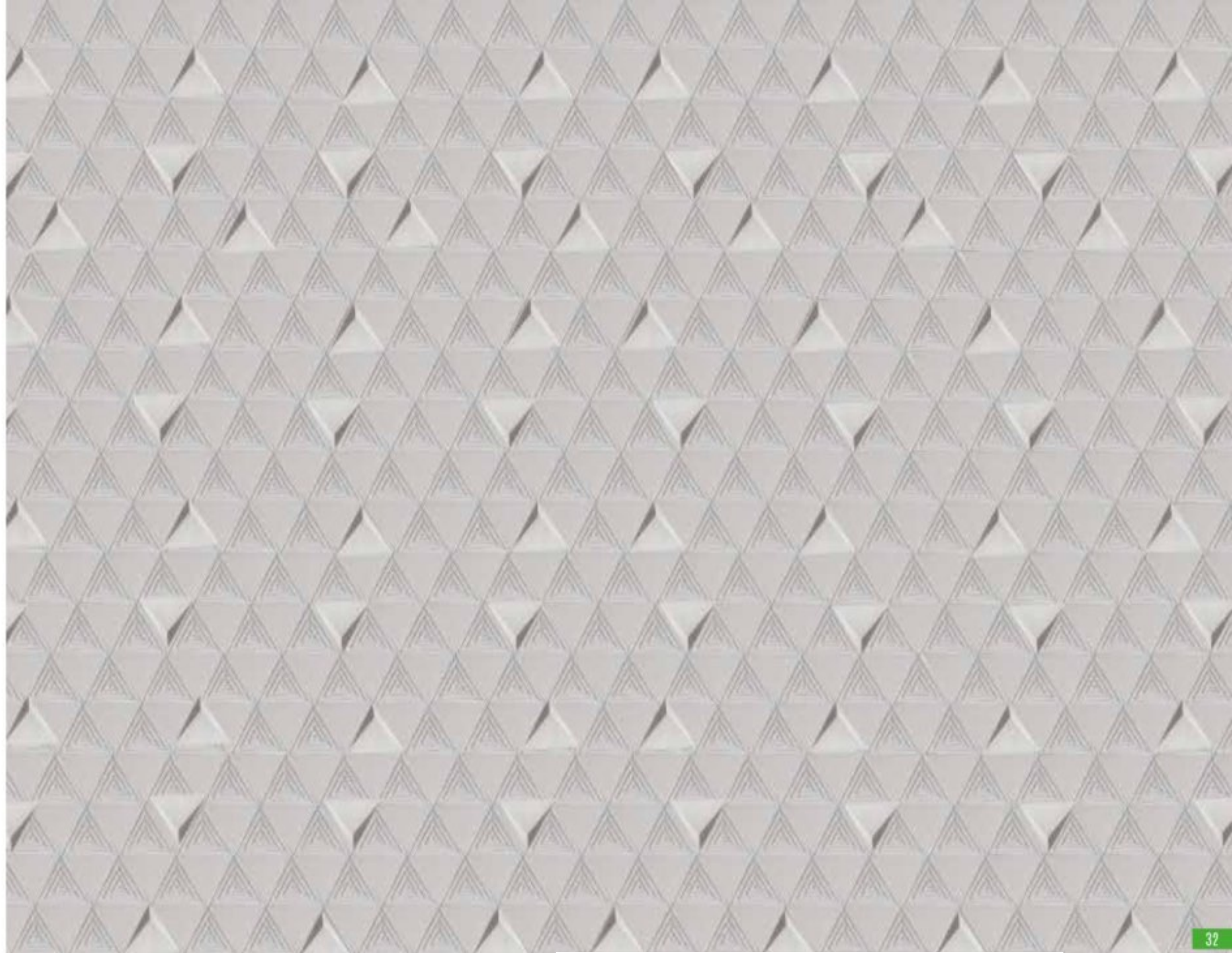






## 3D TILES

The amalgamation of composite forms & spirited approach to profuse emotions, thereby manufacturing into extravagant tile and its respective compositions with the layer of finished texture onto it.





### WINGS

The aerodynamical structure manifests the core characteristics of flow. Giving it a fluid, vibrant & evocative spatial aspect in turning creating a subtle notion of soothing environmental space.



### DIMENSIONS

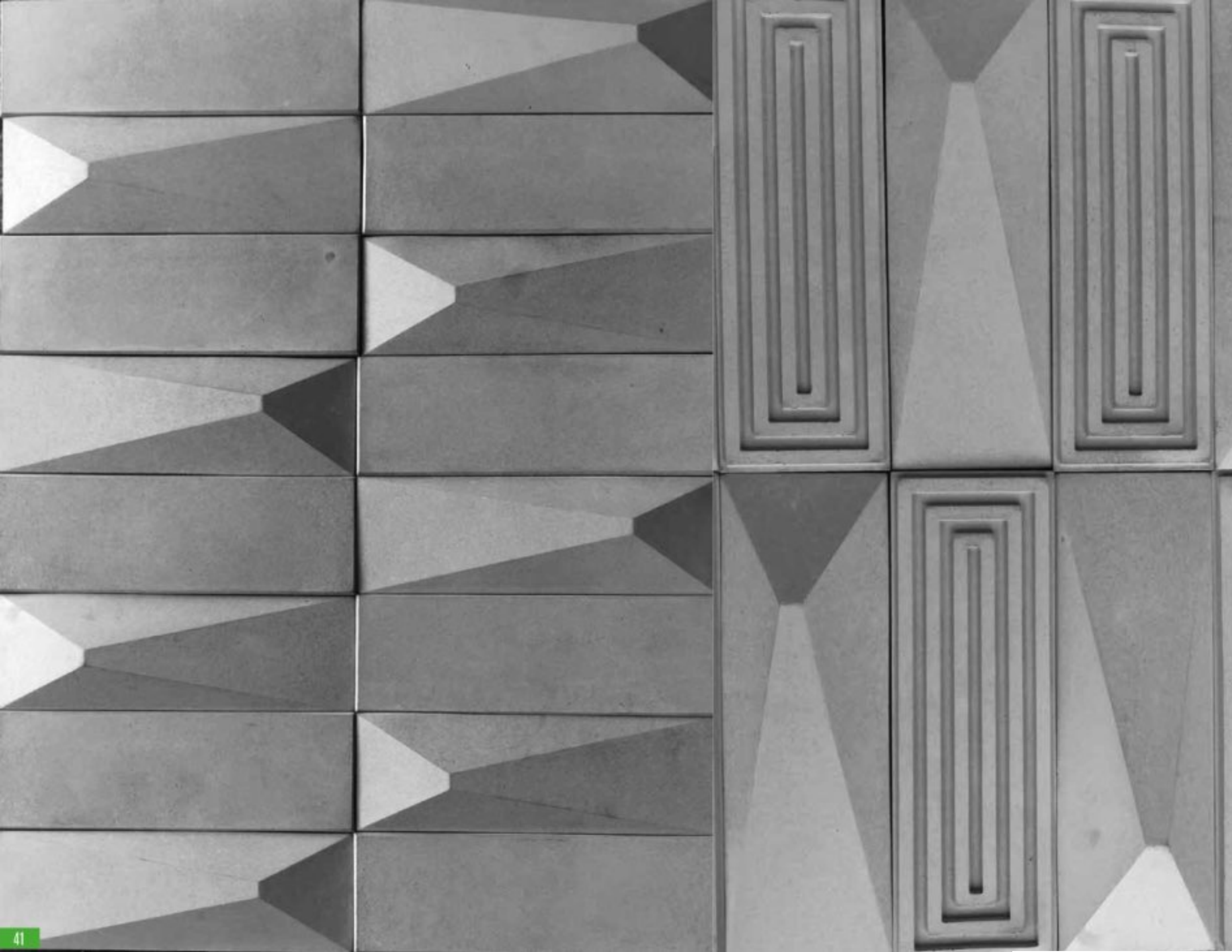
- L 240MM
- W 160MM
- H 33MM







Scanned with CamScanner



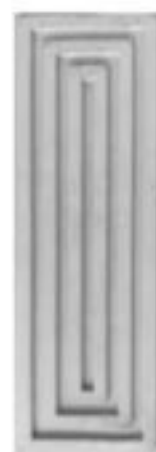
## APEX

The sharp and edgy polygonal dynamics is a result of staunch abyss comprehension of the wide mount ranges of Himalaya which personifies a broad space & tranquil habitat.



DIMENSIONS  
L 300MM  
W 100MM  
H 33MM

DIMENSIONS  
L 300MM  
W 100MM  
H 12MM



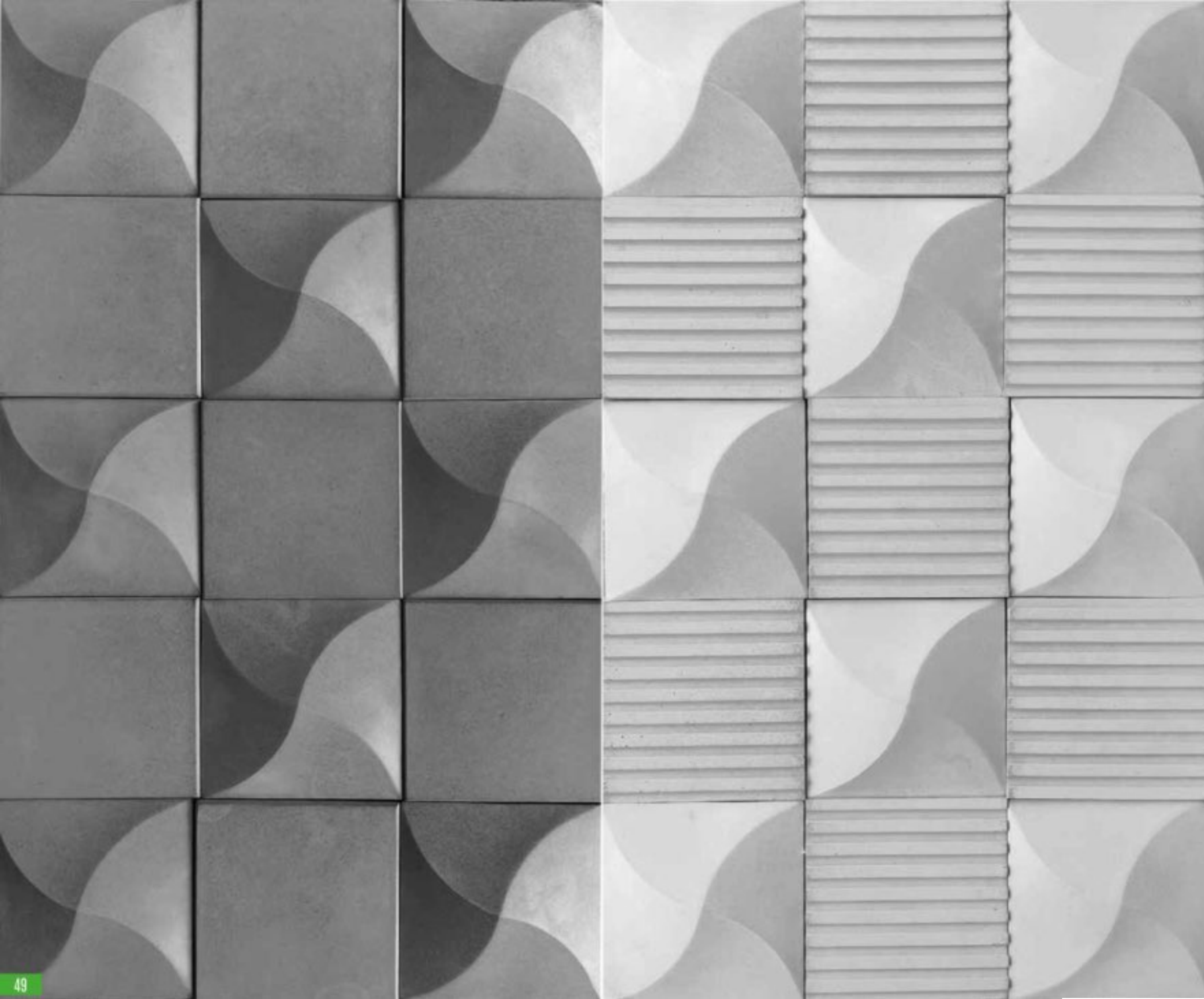
DIMENSIONS  
L 300MM  
W 100MM  
H 12MM





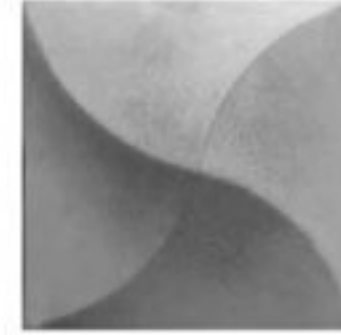
Scanned with CamScanner





## TWIST

The one point twisted hologram anatomy entangles our brain's into a mind gagging hypnotic effect, thereby enchancing our perception of the space to be extravagant and bold.

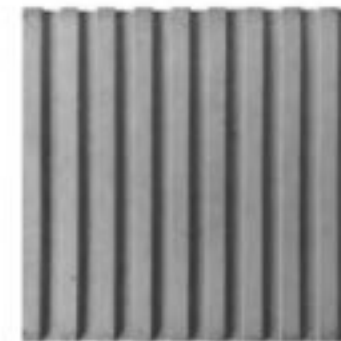
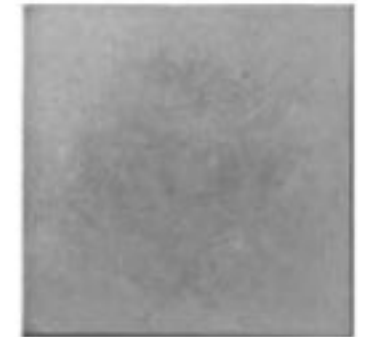


### DIMENSIONS

L 150MM  
W 150MM  
H 33MM

### DIMENSIONS

L 150MM  
W 150MM  
H 12MM

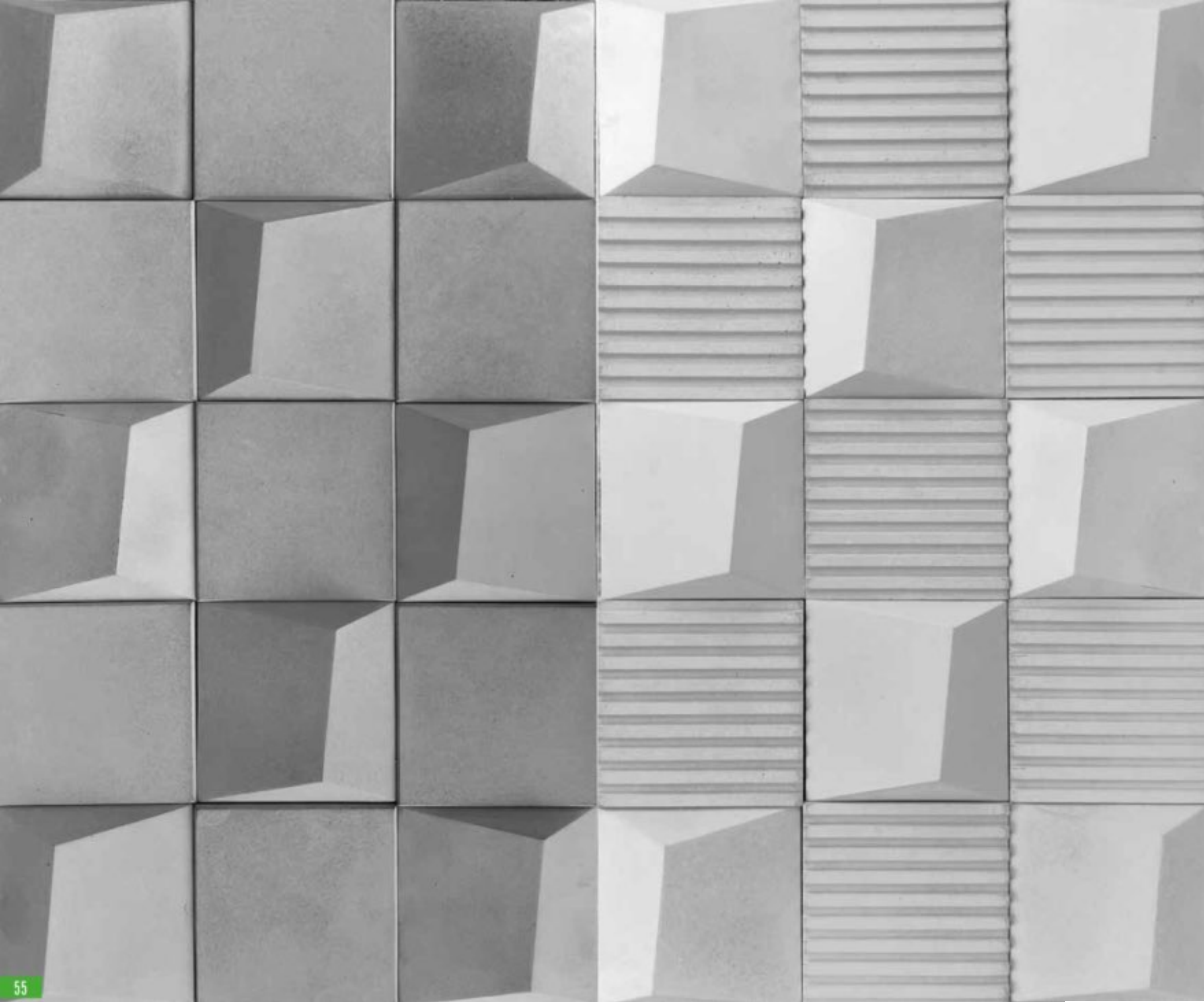


### DIMENSIONS

L 150MM  
W 150MM  
H 12MM

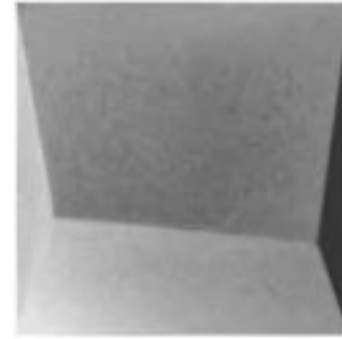






## QUAD

The composite structure is derived from the apparent quadrilateral thus entangling a vicious notion of tenderness & nexus, thereby provoking a ponderous and mindful habitat.

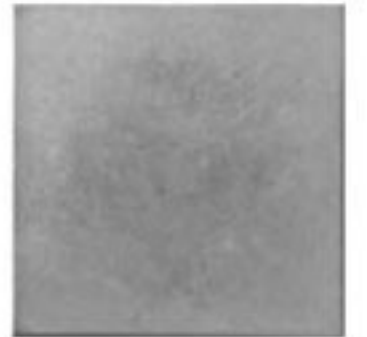


### DIMENSIONS

L 150MM  
W 150MM  
H 33MM

### DIMENSIONS

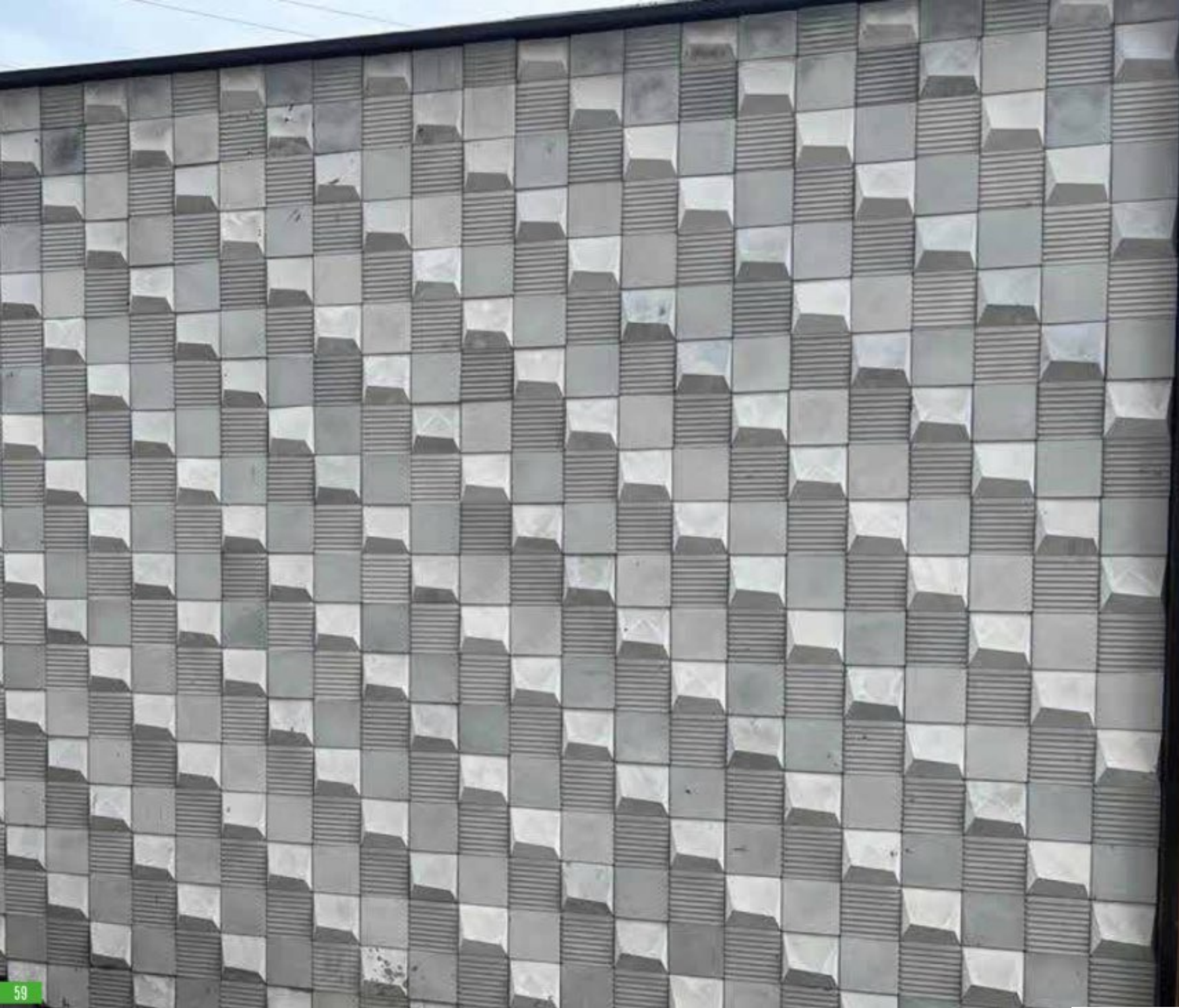
L 150MM  
W 150MM  
H 12MM

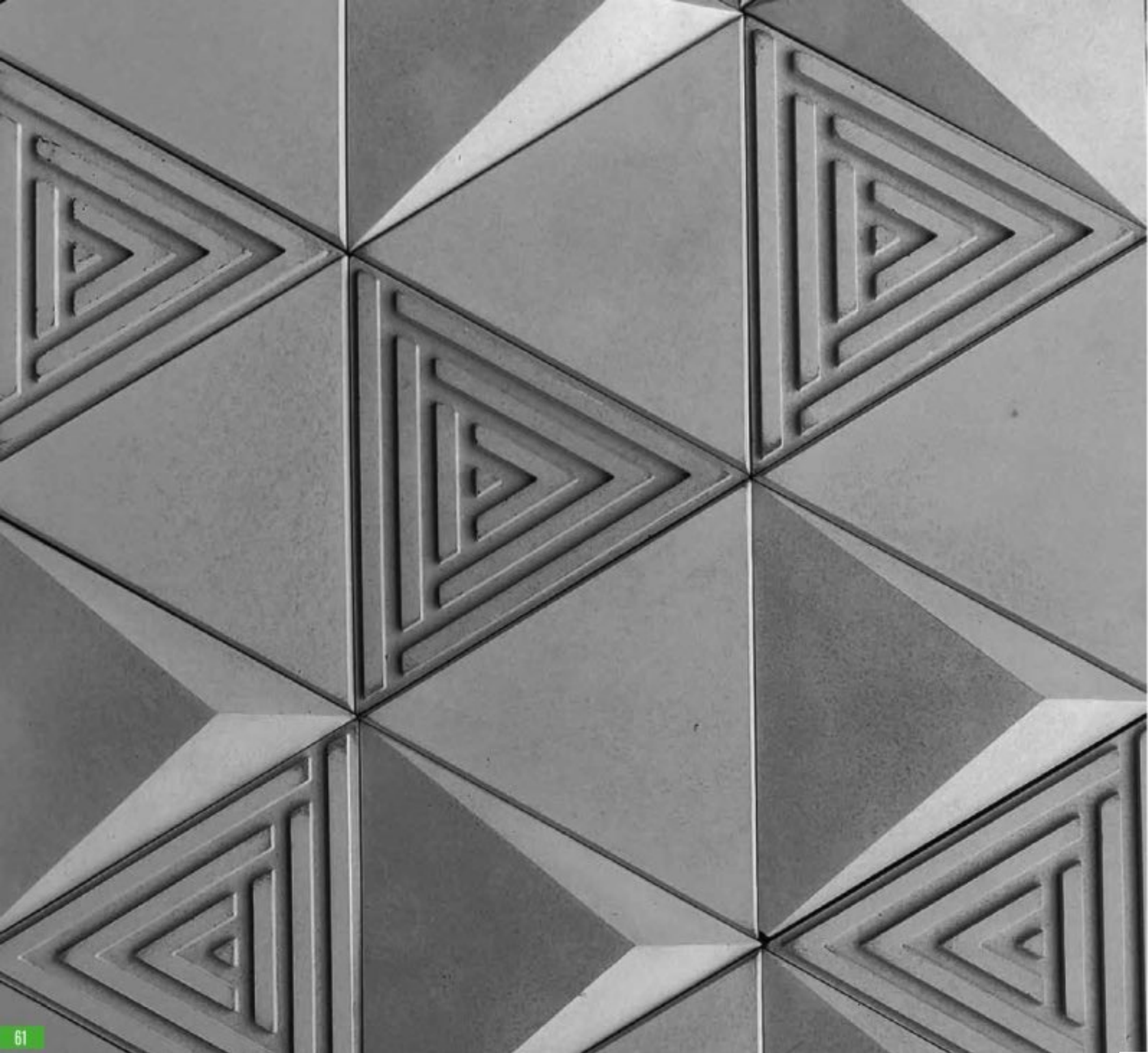


### DIMENSIONS

L 150MM  
W 150MM  
H 12MM

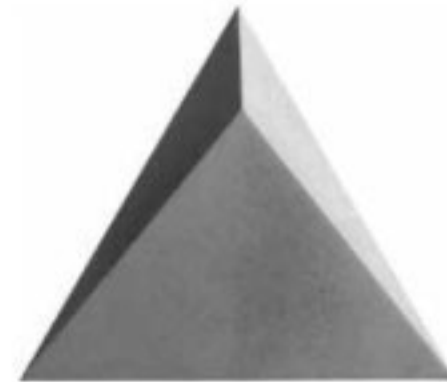






## FRECCIA

The ternion alike anatomy assorted with the blend of extruded polygons and dashes is a sure shot synonym for arrows, hence vibing to the sense of direction and flow thereby exemplifying flux and manoeuvre within the volume.



### DIMENSIONS

L 200MM  
W 173MM  
H 33MM

### DIMENSIONS

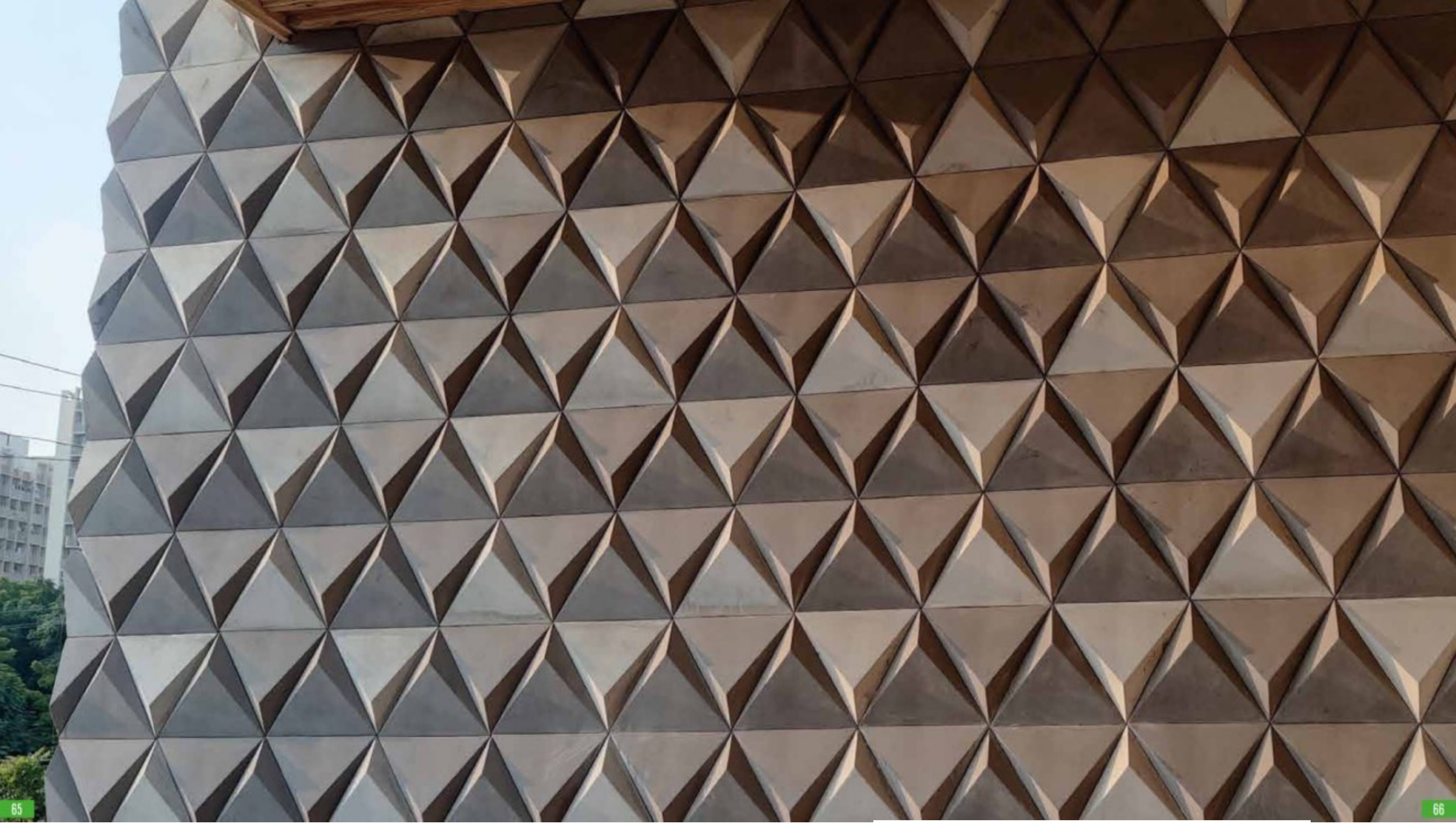
L 200MM  
W 173MM  
H 12MM

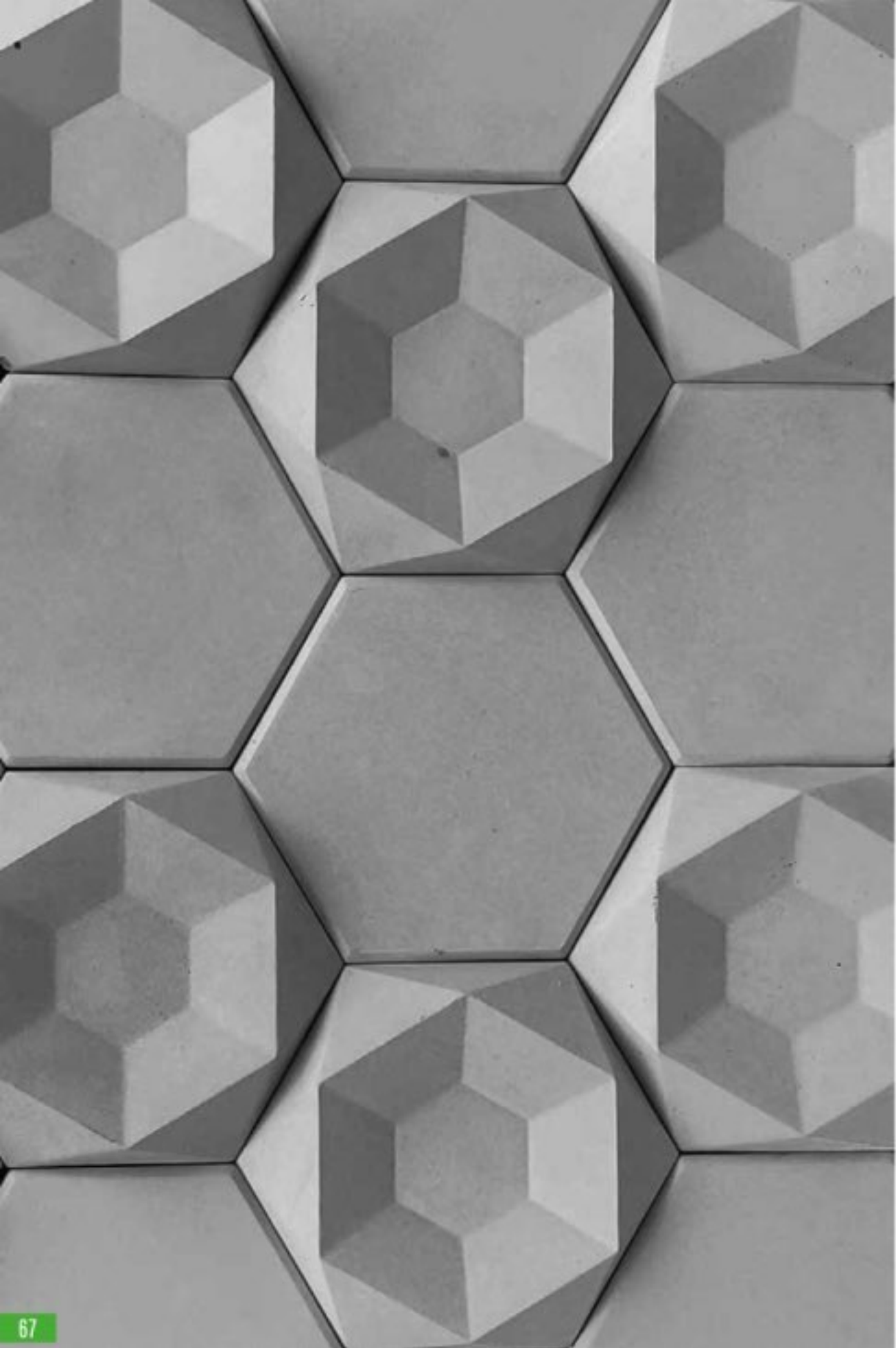


### DIMENSIONS

L 200MM  
W 173MM  
H 12MM







### NEXUS

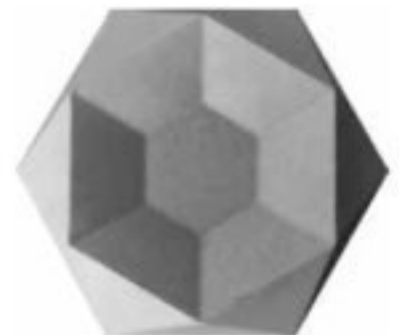
It is a heavenly composition between the crown and the hexa which amalgams the best features of both the contrasting structures into one canvas. The overall structural composition indicates a complex networking which creates a sense of direction.

#### DIMENSIONS

- L 200MM
- W 173MM
- H 33MM

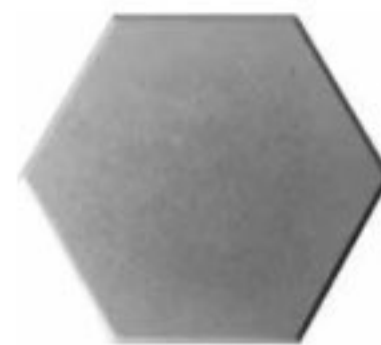
### CROWN

The innuendo three-fold anatomy is a detailed derivative of various kinds of composition and majorly diamond, representing the aspect of togetherness and grand within the habitat.



#### DIMENSIONS

- L 200MM
- W 173MM
- H 33MM



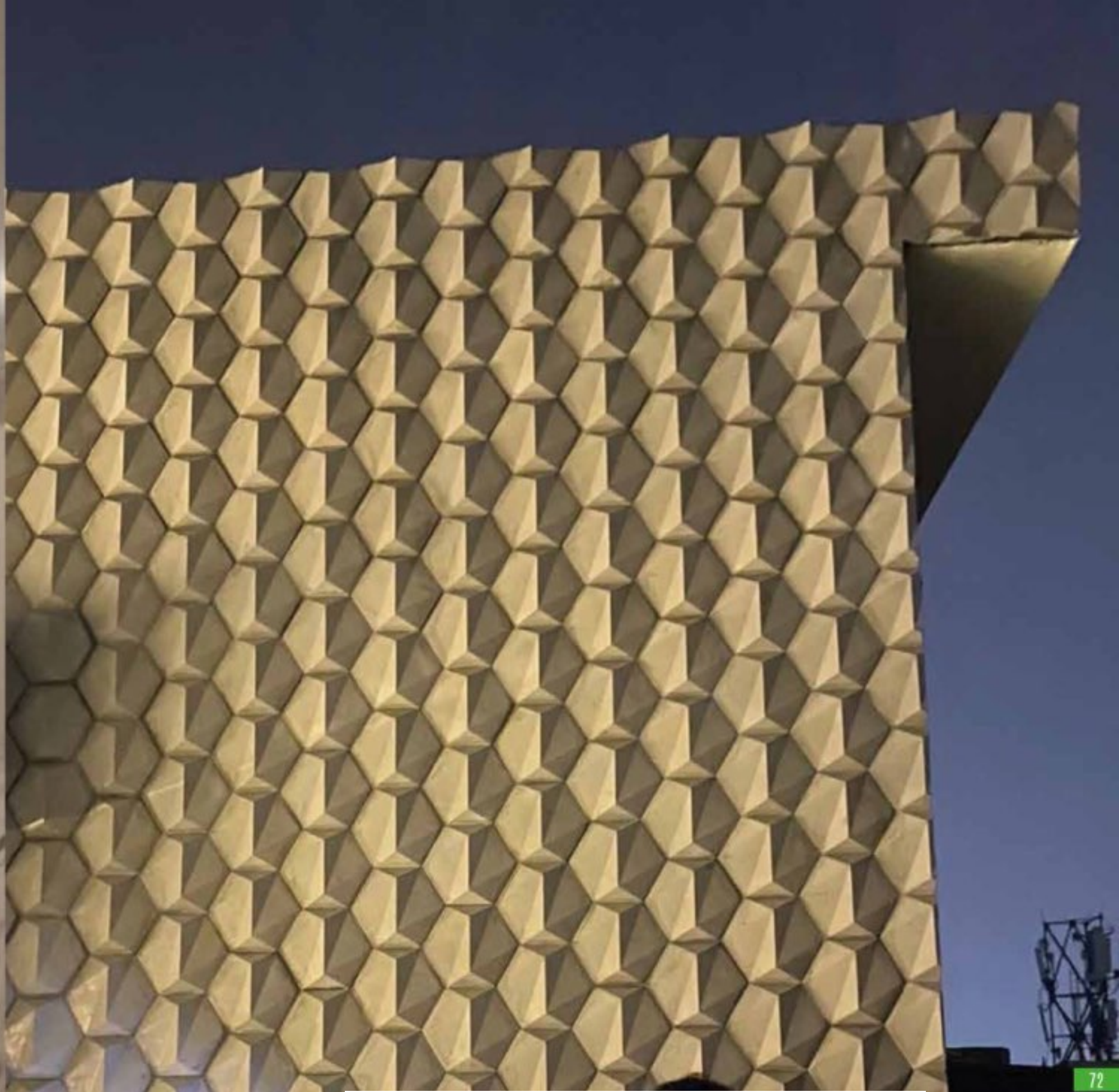
### HEXA

As the name suggests hexa is a form derivative of the chemical composition of benzene ring which represents strength and reliability hence creating a calm and composed environment within the space allocated.

#### DIMENSIONS

- L 200MM
- W 173MM
- H 33MM





Scanned with CamScanner

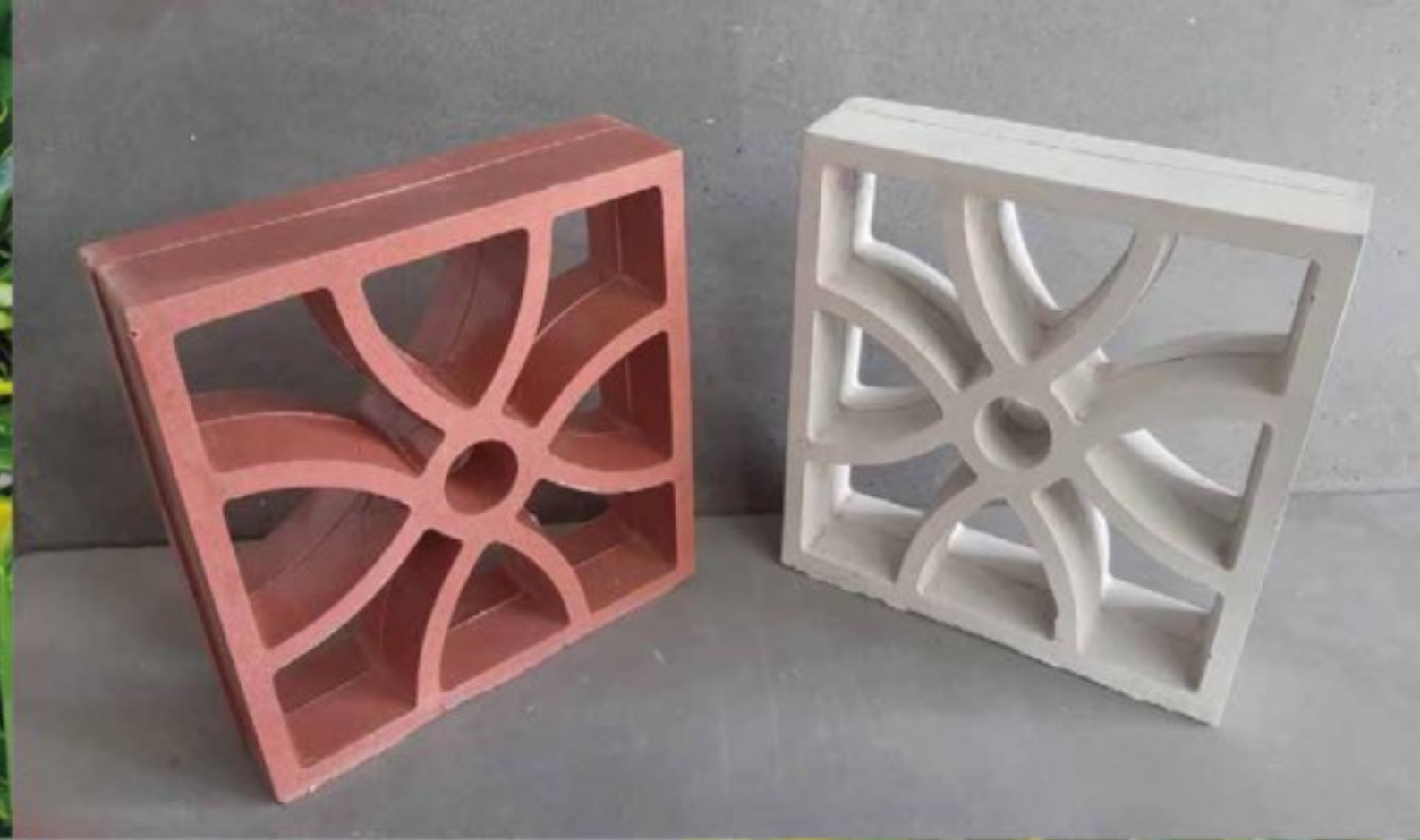


Scanned with CamScanner

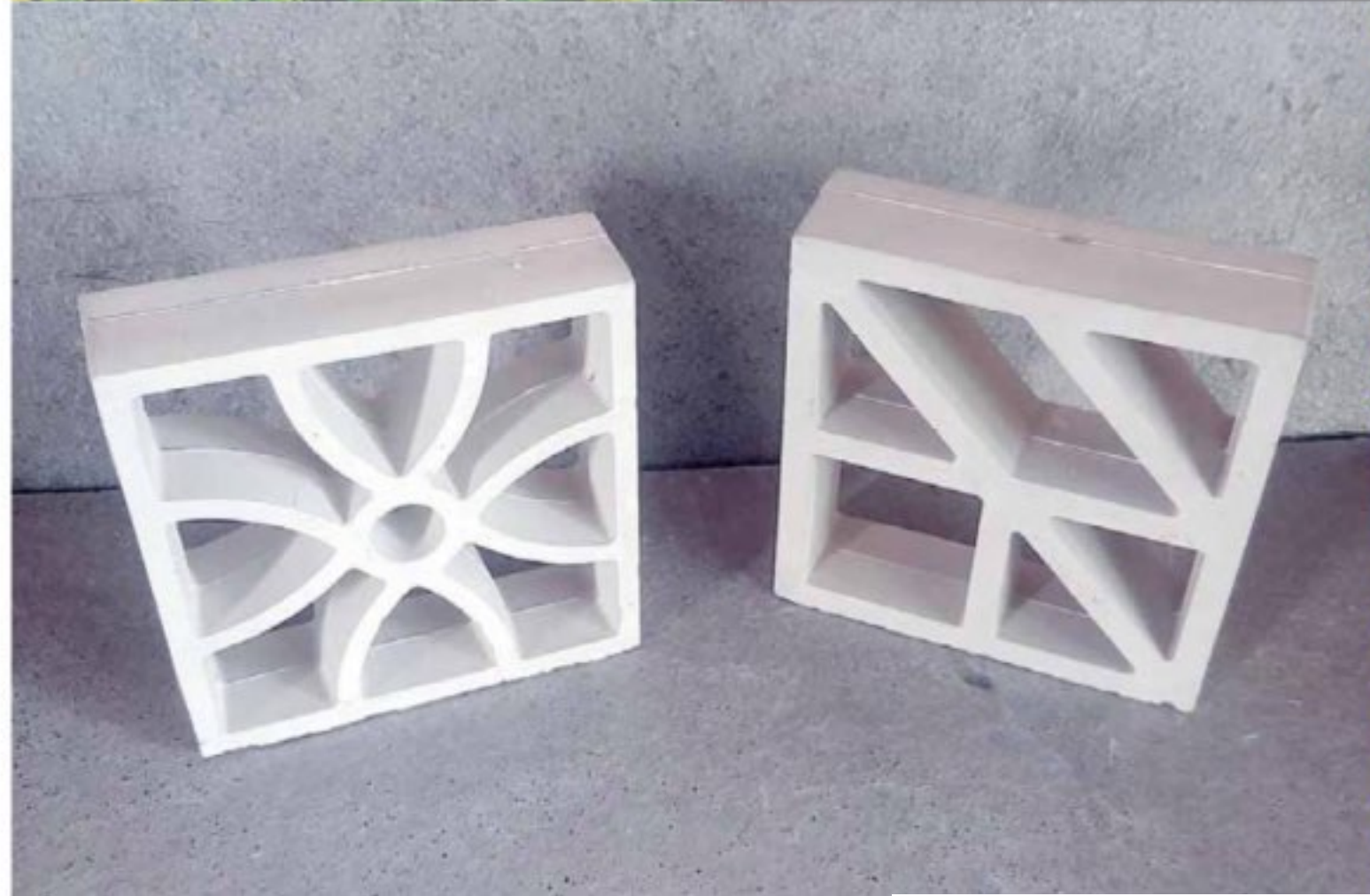


# BREEZE BLOCKS & CONCRETE CLOCK

DIMENSIONS  
L 150MM  
W 150MM  
H 40MM



DIMENSIONS  
L 200MM  
W 200MM  
H 60MM



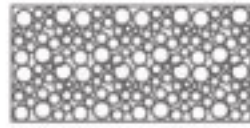
# TECHNICAL SPECIFICATIONS



Compressive Strength  
60 - 80 Mpa



Flexural Strength  
6 - 8 Mpa



High Density



Resistant to  
Climate Change



Surface Flatness  
 $\pm 6\%$



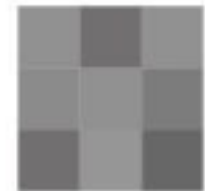
Potential for  
customization



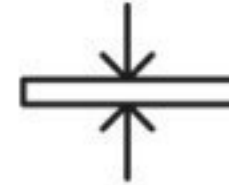
UV Resistant



Resistant to  
Absorption



Color Shade  
Difference V3 Class



Thickness  
 $\pm 6-8\%$



Homogeneous  
Color

# INSTALLATION PROCEDURES

## Wet Installation Method

Wet installation method which is also known as direct adhered method, it is the most common method used for the installation of natural stone cladding. Wet cladding method is used for installing ARCHICRETE Concrete Panels and Tiles on the cement plastered walls.

1. SI class cement-based adhesive are used in this method.
2. Plastered wall to be rough finished for mechanical bonding, wet cladding can be initiated directly on wall.
3. If the wall is painted remove the layer using grinders than cut grooves into wall using an angle grinder, horizontally as well as vertically to create keys, for mechanical bonding.
4. Hacking of old plaster using a chisel or a hammer to make the surface.
5. Rough the the panels / tiles back surface using grinder and clean the dust from the product.
6. Wet the plastered wall as well as the panels / tiles from the back surface.
7. Apply the adhesive on the wall and the product with the notched trowel.
8. Press the panels / tiles firmly onto wall with a twisting action. Ensure gloves and hands should be clean.
9. Spacers are recommended for the panels.
10. Remove excess adhesive from joints and cladding product before drying has occurred and clean the product with the wet cloth / sponge. Ensure the cloth / sponge should clean.
12. Lift and replace random cladding to ensure that 100% contact is being achieved between the cladding and adhesive (no voids behind cladding).
13. The Panel Surface to be treated with the sealer.
14. Spot bonding is not recommend any method of installation.

## Dry Installation Method ( Using Polyurethane Based Adhesive)

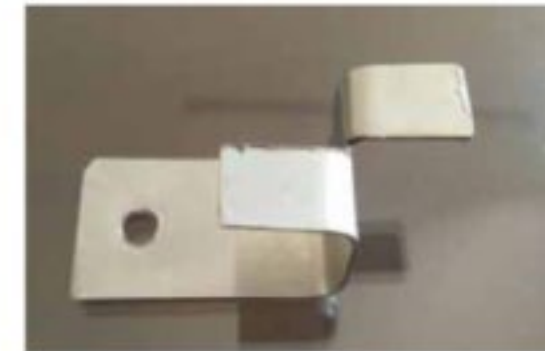
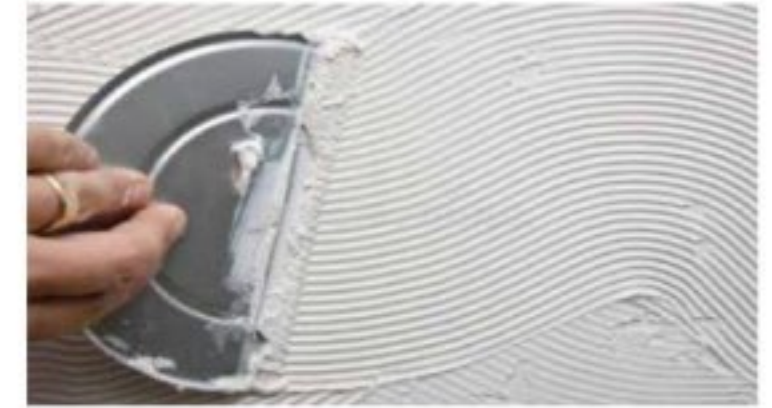
Archicrete Panels can be installed on the plywood and other partition walls using this method. Ensure the surface is clean and dry on which the panels are being installed.

## Dry Installation Method ( Mechanical Clamps)

Dry installation method which is also known as mechanical installation method uses embedded metal anchors and ties for the connection purpose. ARCHICRETE Panels can be installed using this method in exterior and interior. The panels required for this method more thickness because the method requires drilling which could increase the occurrence of cracks.

1. The brackets must be made of stainless steel.
2. Clean all the dirt from the surface of the wall.
3. If the wall is constructed freshly make sure it is properly dried up and the surface is not friable so that the pin could be firmly fixed in the hole drilled.
4. Accurately locate the position of the hole
5. Leave a clear space of at least 2 mm between every two panels

Kindly Contact us for more information.





**ARCHICRETE**  
— *New Era Concrete* —

Mr. Bhargav 99790 96023

Mr. Arvindbhai 98253 82485



# Bhagavandas Keshavlal Prajapati

- Elevation Concrete Block
- Natural Expose Cladding Brick
- Concrete 3D cladding
- Teracotta Elevation Block
- Single Roof Tile

Opp. Jalaramparatha House,  
Nr. Gota Cross Road,  
Sarkhej-Gandhinagar Highway,  
Gota, Ahmedabad.



Mr. Tejas 99132 50864  
All types of fitting work

